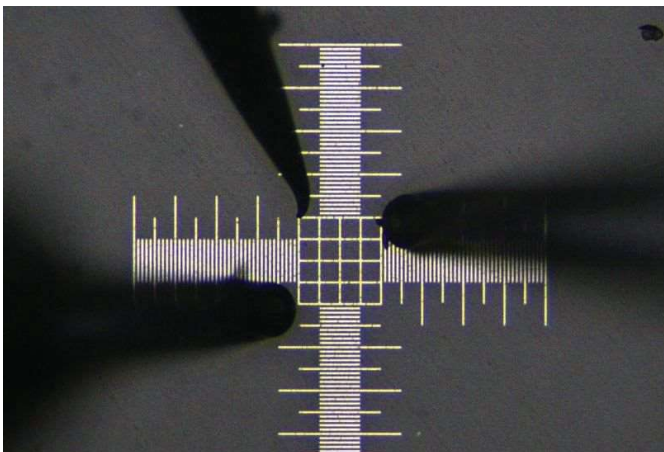


Everbeing Fibre Optic Probe Station

Our 4-inch photonic probe station allows precision alignment and characterisation of optical fibre, DC and RF measurements at an affordable cost.



The image below is looking at 1mm crosshairs, two fibre holders and one DC positioner. We can offer microscope magnification from 80X to 1650X.

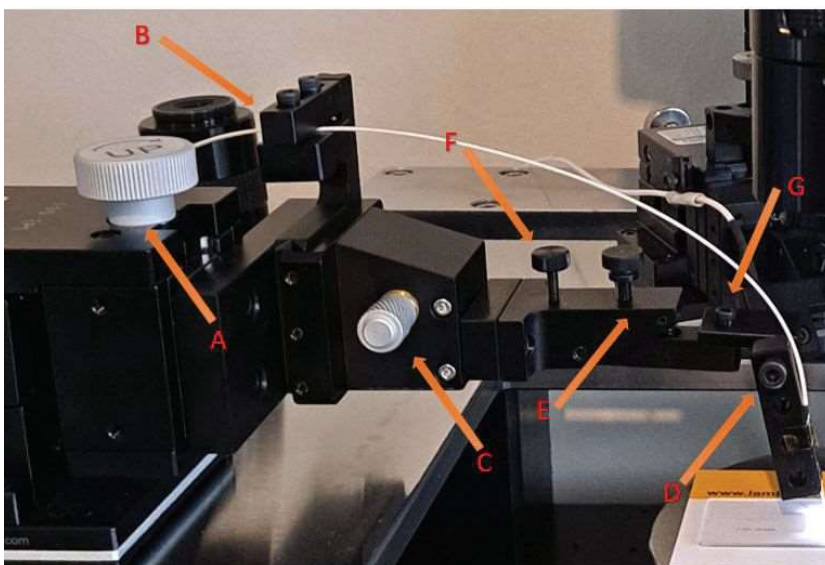


Our system allows full flexibility to inject your fibre in to your DUT from horizontal to vertical and any angle in between.

Our precision micropositioners allow better than $0.3\mu\text{m}$ alignment in X-Y-Z, fibre alignment from $0-90^\circ$ with theta adjustment. The positioner large knobs allow fine adjustment and as the movement is held against a spring on linear bearing our micropositioners have zero backlash, a drawback of other brands using vernier micropositioners where you experience a noticeable jump as you change direction. Eliminating this jump allows for greater fine tuning using a power meter at the critical stage.



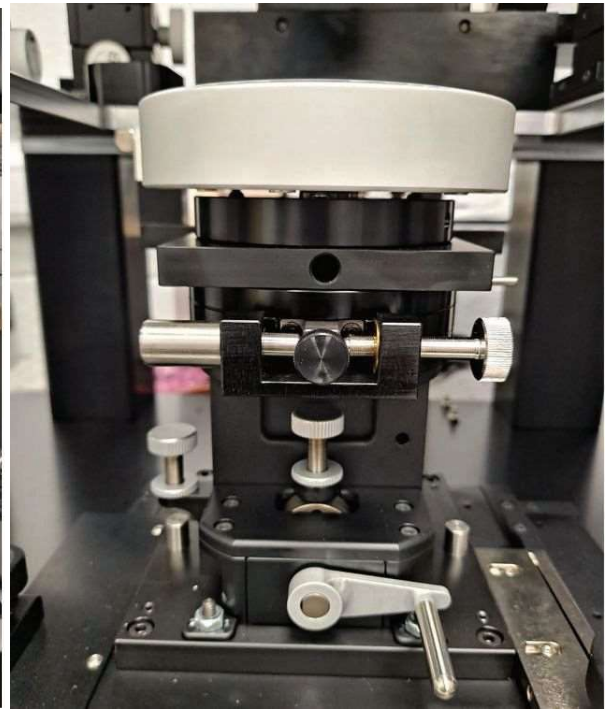
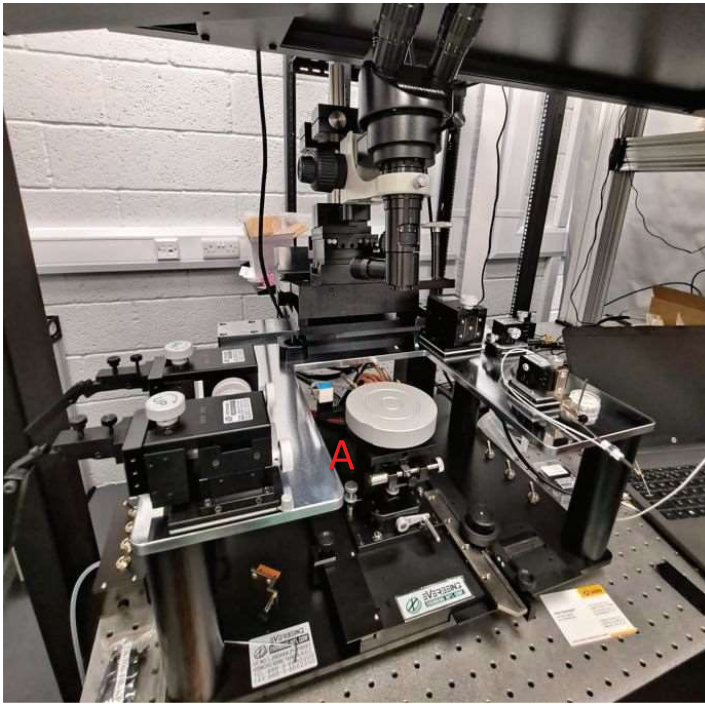
Micropositioner/Fibre Holder Adjustment



Fibre adjustments

- A. Z- Micropositioner Height Adjustment $<0.3\mu\text{m}$
- B. X-Y micropositioner adjustment $<0.3\mu\text{m}$
- C. Fibre cable clamp
- D. Theta adjustment
- E. Course angle adjustment
- F. Fine angle adjustment
- G. Angle lock
- H. Yaw – angular adjustment

4-inch System fitted with Optional Hot Chuck & Microscope Tilt



Fibre Holder Design

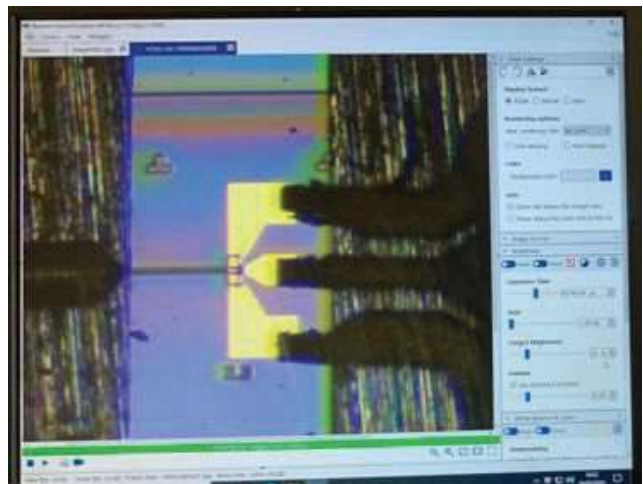
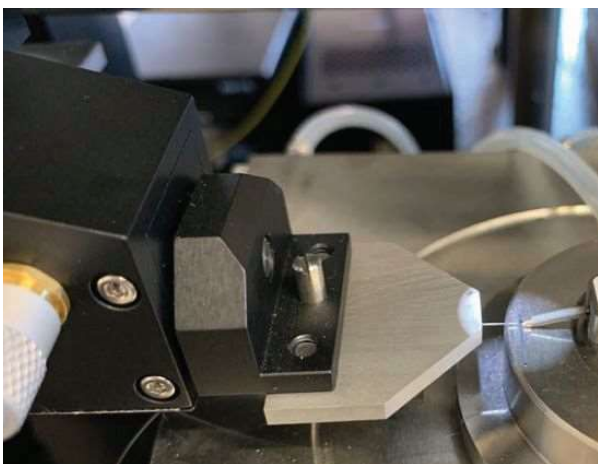
The system has been designed for complete flexibility. The standard rectangular section at the end that holds the fibre in place with Kapton tape, is 10mm square, 30mm in length with a precision 1mm V groove. This is secured in place with a M4 bolt. This allows you to custom build your own adapters to use with our micropositioner, single, multiple or fibre arrays.



Fixed Horizontal Fibre Holder Design

Our system has been designed for flexibility, however if you are using probing horizontally, we can offer a low-profile fibre holder as shown below that allows precise alignment and into a grating coupler or DUT.

The fibre is held underneath using Kapton tape and a precision 1mm V groove.




Further information can be found on our website by clicking the link below

[CLICK HERE](#)

You can click the image below to watch a video of the C-4 Probe Station in action showing RF, DC and Fibre probing and the microscope with X-Y panning in operation.



 **西華産業株式会社**

東京都千代田区丸の内3-3-1新東京ビル3F

西華産業株式会社 電子機器部

当製品担当窓口/森本頼子(もりもとよりこ)

TEL: +81-3-5221-7112

morimotoy@jp.seika.com

<https://www.seika.com/>